

Thread • Fils

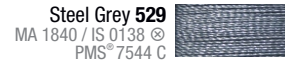
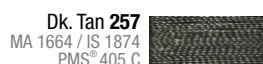
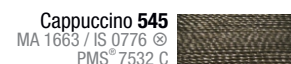
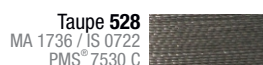
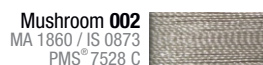
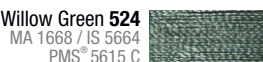
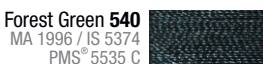
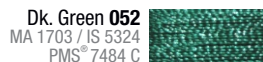
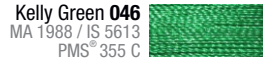
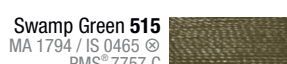
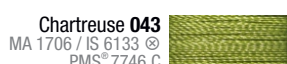
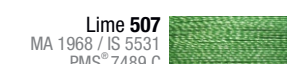
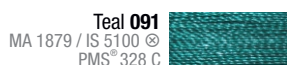
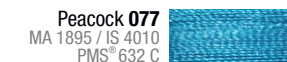
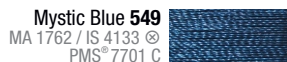
Charte des couleurs de fil pour les emblèmes brodés



Dk. Red 508 MA 1981 / IS 1912 PMS® 1955 C		Cream 004 MA 1723 / IS 0651 PMS® 7506 C		Maroon 035 MA 1983 / IS 2944 PMS® 5185 C		Ultraviolet 538 MA 1634 / IS 3114 PMS® 2695 C	
Red 032 MA 1839 / IS 1902 PMS® 187 C		Maize 536 MA 1826 / IS 0811 PMS® 1355 C		Wine 034 MA 1635 / IS 2222 PMS® 222 C		Dk. Navy 025 MA 1844 / IS 3344 PMS® 5395 C	
Foxy Red 201 MA 1838 / IS 1904 PMS® 200 C		Amberlite 073 MA 1673 / IS 0832 PMS® 465 C		Russet 206 MA 1784 / IS 2113 PMS® 7638 C		Lt. Navy 024 MA 1966 / IS 3323 PMS® 2766 C	
Spanish Red 053 MA 1637 / IS 1704 PMS® 1795 C		Sand 003 MA 1939 / IS 0643 PMS® 7503 C		Cranberry 217 MA 1781 / IS 2011 PMS® 207 C		Imperial Blue 070 MA 1967 / IS 3323 PMS® 281 C	
Warm Red 082 MA 1878 / IS 1703 PMS® 485 C		Marine Gold 039 MA 1792 / IS 0542 PMS® 118 C		Flesh Pink 526 MA 1656 / IS 1760 PMS® 480 C		Steel Blue 521 MA 1764 / IS 3444 PMS® 534 C	
Neon Orange 503 MA 1837 / IS 1306 PMS® 811 C		Old Gold 096 MA 1672 / IS 0822 PMS® 126 C		Lt. Pink 030 MA 1815 / IS 2363 PMS® 1895 C		Royal Blue 023 MA 1767 / IS 3333 PMS® 2746 C	
Tropical Orange 534 MA 1987 / IS 1305 PMS® 1665 C		Tiger Eye 535 MA 1791 / IS 0822 PMS® 125 C		Pink 523 MA 1921 / IS 2650 PMS® 210 C		Sapphire 520 MA 1676 / IS 3543 PMS® 7687 C	
Dk. Orange 038 MA 1621 / IS 1332 PMS® 1595 C		Lt. Coco 518 MA 1973 / IS 1134 PMS® 7512 C		HiVis Pink 563 MA 1909 / IS 1940 PMS® 191 C		Acme Blue 022 MA 1934 / IS 3522 PMS® 2935 C	
Orange 501 MA 1765 / IS 1102 PMS® 716 C		Dk. Bronze 009 MA 1730 / IS 0941 PMS® 7575 C		Rose 031 MA 1994 / IS 1950 PMS® 191 C		Juniper 036 MA 1797 / IS 3902 PMS® 300 C	
Coral 531 MA 1952 / IS 1352 PMS® 1635 C		Copper 010 MA 1657 / IS 1154 PMS® 7588 C		Old Rose 512 MA 1681 / IS 1906 PMS® 1945 C		Gobel Blue 020 MA 1733 / IS 3331 PMS® 279 C	
Dk. Gold 042 MA 1955 / IS 0904 PMS® 144 C		Mocha 543 MA 1945 / IS 1346 PMS® 4695 C		Neon Red 532 MA 1907 / IS 1720 PMS® 812 C		Cadet Blue 078 MA 1775 / IS 3830 PMS® 7691 C	
Gold 005 MA 1951 / IS 0800 PMS® 130 C		Chocolate 525 MA 1744 / IS 0945 PMS® 7519 C		Fuchsia 530 MA 1709 / IS 2508 PMS® 2395 C		Powder Blue 059 MA 1671 / IS 3641 PMS® 646 C	
Med. Gold 041 MA 1624 / IS 0700 PMS® 7409 C		Brown 095 MA 1654 / IS 1565 PMS® 7518 C		Lavender Red 001 MA 1984 / IS 2521 PMS® 215 C		Oriental Blue 216 MA 1830 / IS 3331 PMS® 2718 C	
Lt. Gold 040 MA 1980 / IS 0600 PMS® 108 C		Sable 548 MA 1659 / IS 1876 PMS® 4625 C		Lavender 026 MA 1712 / IS 2640 PMS® 2573 C		Lt. Blue 215 MA 1828 / IS 3830 PMS® 7689 C	
Yellow 074 MA 1924 / IS 0310 PMS® Yellow C		Dk. Brown 012 MA 1931 / IS 1776 PMS® 440 C		Iris 504 MA 1631 / IS 2830 PMS® 2577 C		Sky Blue 058 MA 1871 / IS 3840 PMS® 283 C	
HiVis Yellow 562 MA 1935 / IS 6010 PMS® 389 C		Brass 513 MA 1773 / IS 0940 PMS® 7571 C		Blackberry 544 MA 1680 / IS 2944 PMS® 519 C		Baby Blue 017 MA 1932 / IS 4240 PMS® 297 C	
Daffodil 547 MA 1683 / IS 0600 PMS® 129 C		Hazel 510 MA 1856 / IS 1115 PMS® 1535 C		Plum 500 MA 1719 / IS 2711 PMS® 255 C		Cloudy Jade 542 MA 1900 / IS 5822 PMS® 557 C	
Pale Yellow 511 MA 1666 / IS 0270 PMS® 461 C		Rust 062 MA 1821 / IS 1335 PMS® 7620 C		Purple 219 MA 1633 / IS 2715 PMS® 2617 C		Tropic Blue 213 MA 1647 / IS 5450 PMS® 344 C	
Ivory 527 MA 1822 / IS 0870 PMS® 7527 C		Dk. Rust 516 MA 1899 / IS 1334 PMS® 174 C		Dk. Purple 027 MA 1722 / IS 3541 PMS® 2685 C		Fountain Green 537 MA 1847 / IS 5115 PMS® 7465 C	

Thread • Fils

Charte des couleurs de fil pour les emblèmes brodés



Given the nature of colour-dyed fabrics, it is possible for some colour variances to occur, within acceptable ranges.

Separate charts are available for other fabric, thread, ink and emblem styles, types and colours.

The Pantone® PMS®, Madeira® [MA####] and Isacord™ [IS####] codes listed in this chart are provided for reference purposes only and are subject to personal interpretation given the potential changes in lighting conditions and material textures. Pantone® and PMS® are registered trademarks of Pantone Inc. Madeira® is a registered trademark of Madeira USA Inc. Isacord™ is trademark of Ackermann-Göggingen AG & Amann & Söhne GmbH & Co.

It is the responsibility of the purchaser to be aware of Emblemtek's policies in full. Emblemtek declines all responsibility and liability or any errors or omissions that there may be with respect to this information. These details are subject to change without advanced notice.

Emblemtek trademarks, logos, designs and trade forms may not be used, copied or reproduced without express written consent.

Emblemtek® is a registered trademark of Emblemtek Solutions Group Inc.

Emblemtek is pleased to offer you service in English or French, Canada's official languages.

Copyright © 2016 Emblemtek Solutions Group Inc.

Étant donné la nature des tissus teints, il est possible que certaines variations de couleur se produisent, dans des limites acceptables.

D'autres chartes distinctes sont disponibles pour les autres types, styles et couleurs de tissus, fils, encres et emblèmes.

Les codes Pantone^{MD} PMS^{MD}, Madeira^{MD} [MA####] et Isacord^{MC} [IS####], indiqués dans ce tableau sont fournis uniquement à titre de référence et sont sujets à interprétation personnelle étant donné les conditions changeantes d'éclairage et de textures de matériel. Pantone^{MD} et PMS^{MD} sont des marques déposées de Pantone Inc. Madeira^{MD} est une marque déposée de Madeira USA Inc. Isacord^{MC} est une marque de commerce de Ackermann-Göggingen AG & Amann & Söhne GmbH & Co.

C'est à l'acheteur que revient la responsabilité d'être au courant des politiques d'Emblemtek dans son intégralité. Emblemtek s'exonère de toute responsabilité pour les erreurs ou omissions que pourraient comporter les présents renseignements. Les présents renseignements sont sujets à changement sans préavis.

Les marques de commerce, les logos, les modèles et les formulaires commerciaux d'Emblemtek ne peuvent être utilisés, copiés ou reproduits sans autorisation écrite.

Emblemtek^{MD} est une marque déposée de Emblemtek Solutions Group Inc.

Emblemtek est fière de vous offrir un service en anglais ou en français, langues officielles du Canada.

Tous droits réservés 2016 Emblemtek Solutions Group Inc.